

Specifications

PF1119LF

TWO-HANDLE WALL MOUNT
SERVICE SINK FAUCET



Product Features

- Ceramic cartridges
- Metal lever handles
- Integral stops
- 3/4" hose thread on spout
- 8" fixed centers with adjustable 7-5/8"~ 8-3/8" range
- Solid brass waterways
- ASSE 1001 vacuum breaker - backflow prevention
- Chrome plated
- cUPC/IAPMO listed
- NSF/ANSI/CAN 61: Q≤1
- NSF 372 (Low lead content)
- ADA compliant



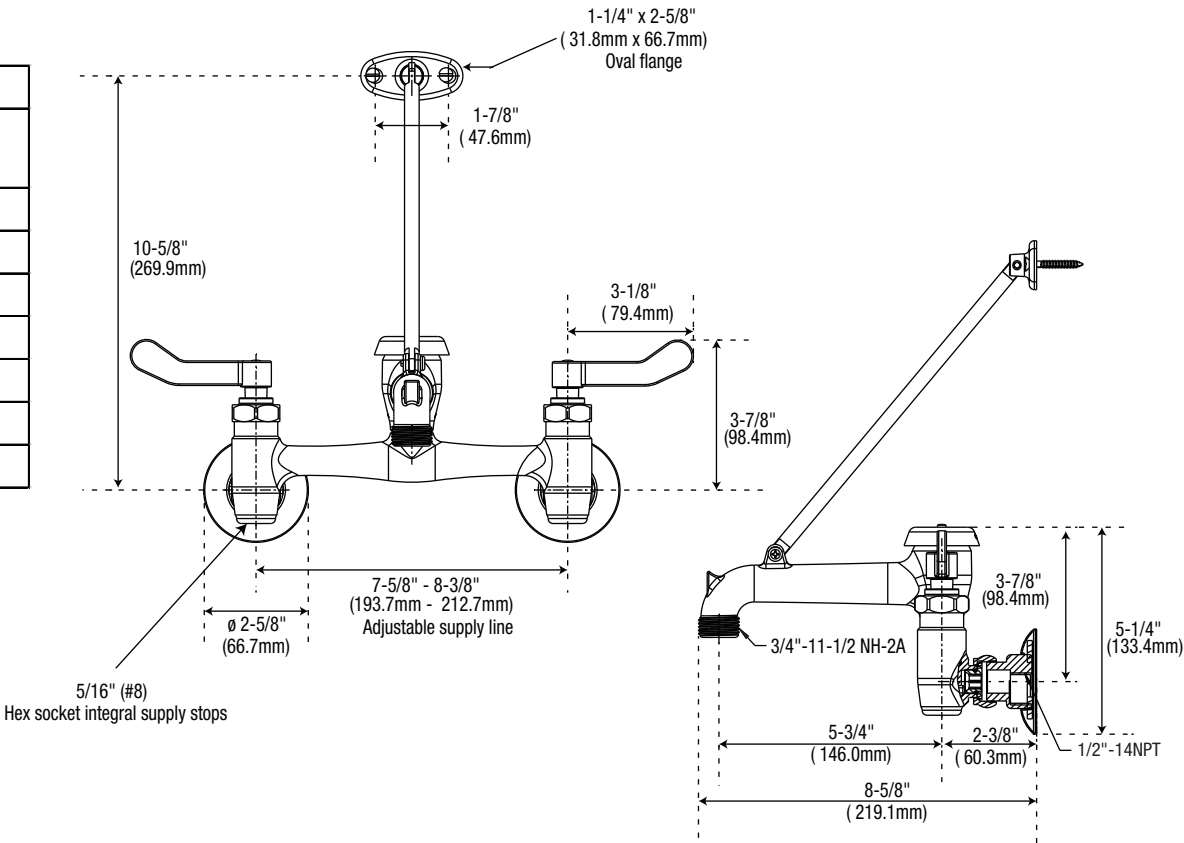
Model Numbers

PF1119LF Chrome

PF1119LF

Product Specifications

Flow Rates	
Pressure (PSI)	GPM
20	4.4
30	5.5
40	6.4
50	7.3
60	8
70	9
80	9.5



NOTE: All dimensions and specifications are nominal and may vary ±1/4". Use actual products for accuracy in critical situations.

Warranty and Codes

This product comes complete with installation, operating, care and maintenance instructions. This PROFLO faucet carries a limited lifetime warranty when installed in residential applications. The warranty is five years in commercial applications. This product meets ASME: A112.18.1.

